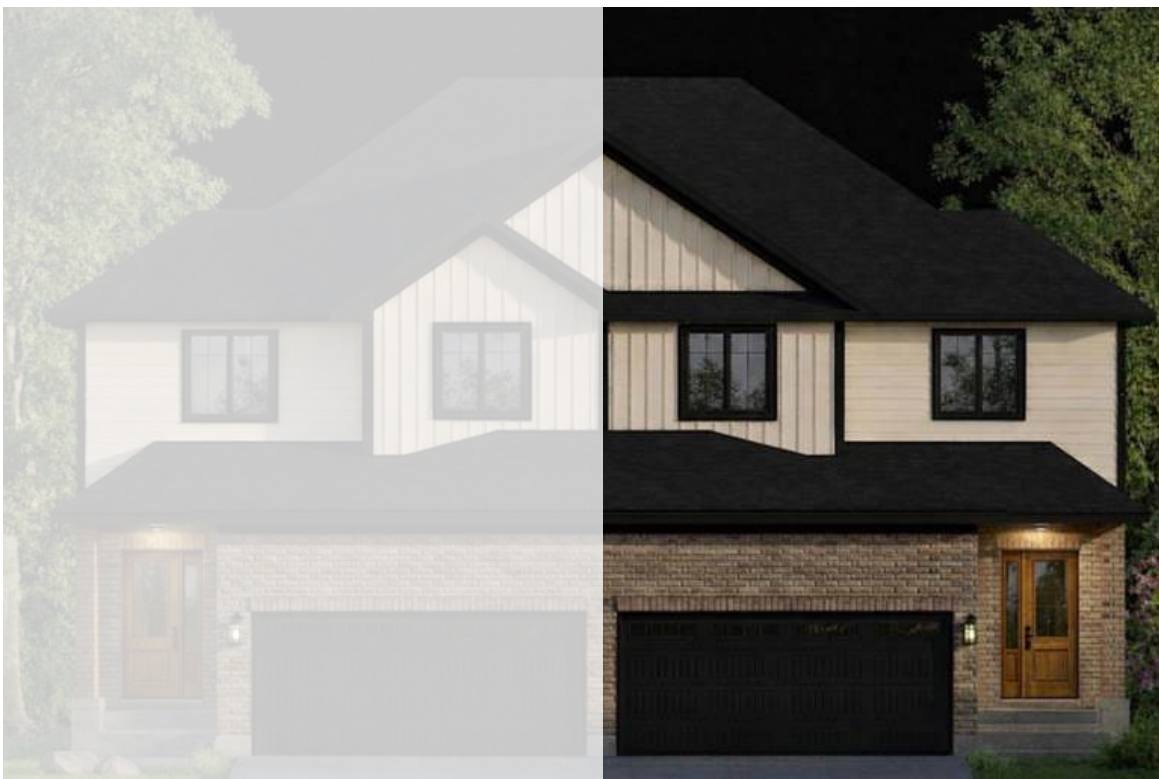


 **BEDELL DRIVE**
COLLECTION OF SEMI DETACHED

114 BEDELL
1,828 SQ. FT.



RIGHT UNIT

ALBY MBANJABAHIZI
PROJECT / PURCHASING COORDINATOR

support@sabatohomes.ca
+1 (519) 489-6758



Welcome home to Drayton. Imagine a place where the charm of a historic rural village meets the precision of modern architectural design.

Bedell Drive's Collection of Semi Detached homes blends the natural beauty of the Conestoga River with the modern comforts of a fully services community.

Nature at your doorstep. Enjoy Conestoga River trails and local conservation areas.

The agrihood concept. A unique approach to living that emphasizes green space, sustainability, and a connection to the land.



Small Town Charm, Big City Culture.

Drayton Ridge is more than a collection of houses; it is a 118-acre master-planned community overlooking the charming old village.

Drayton Festival Theatre.

World-renowned professional live performance in a restored historic building.

Active Living.

Minutes from the PMD Arena, soccer fields, baseball diamonds, and the ABC Park & Splash Pad.



112 BEDELL

1,828 SQ. FT.



3 BEDS

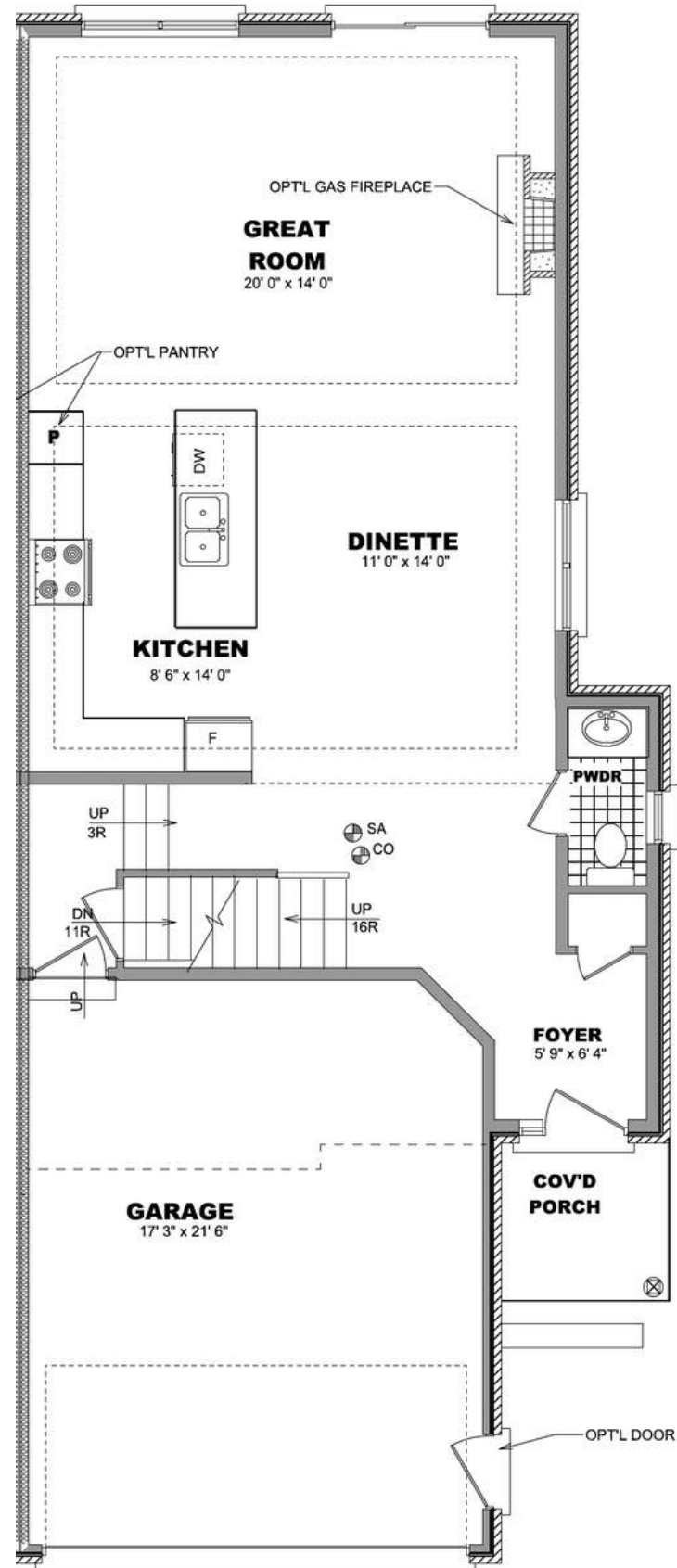


2.5 BATH

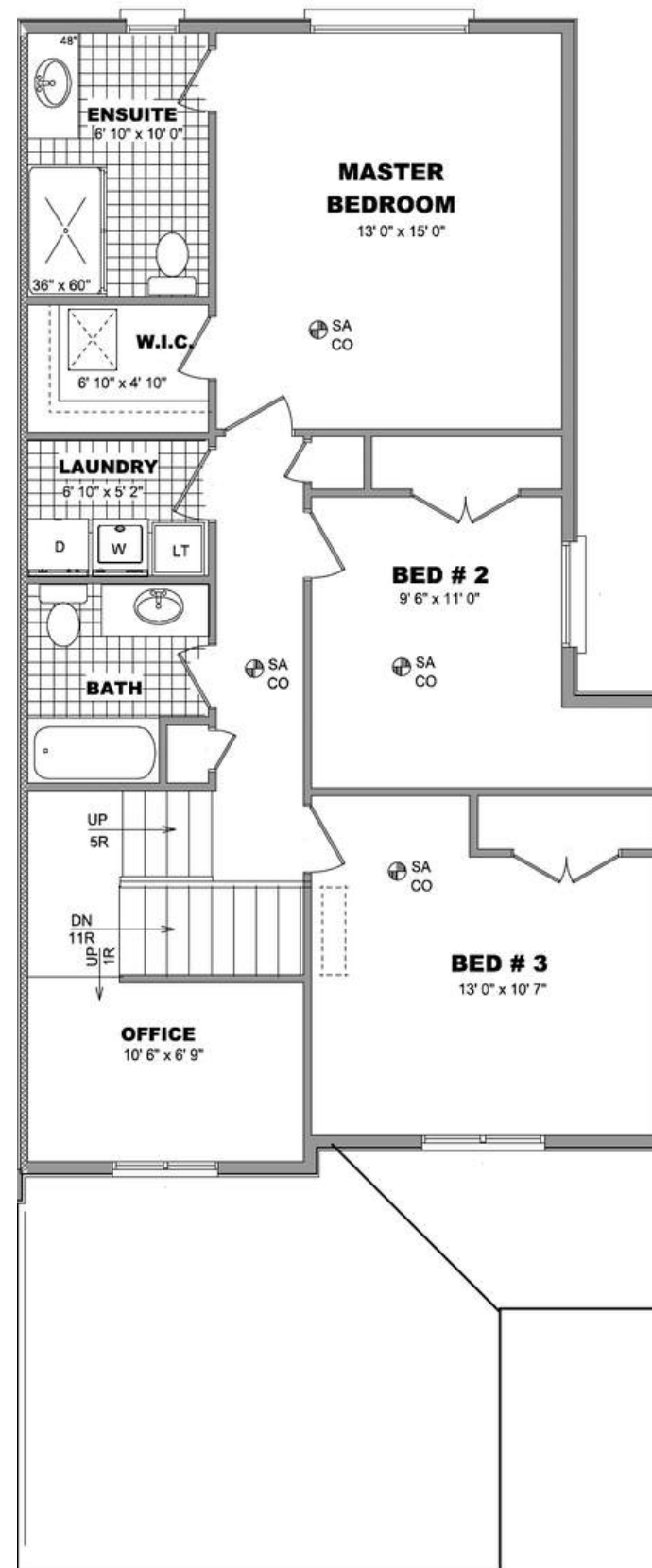


2 CAR

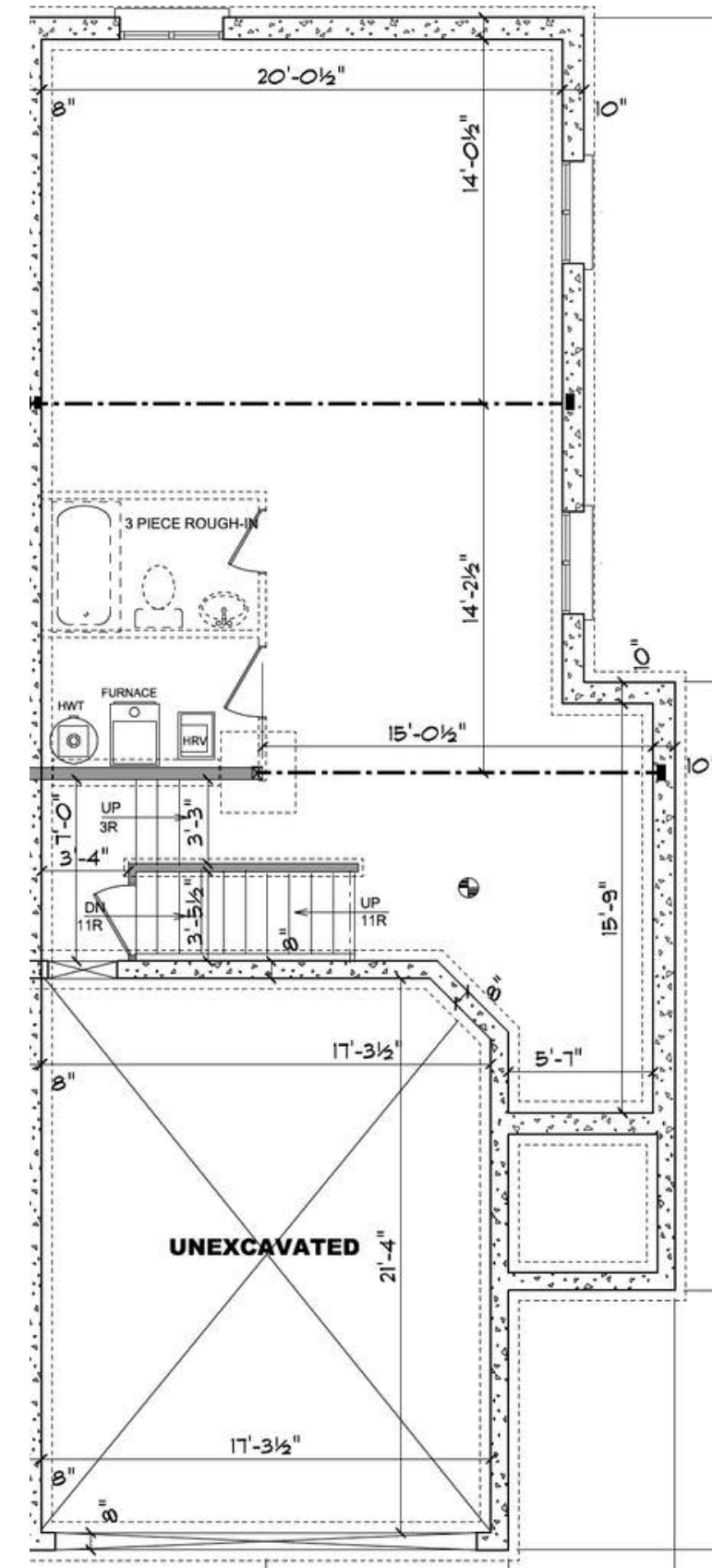
MAIN FLOOR
858 SQ. FT.



SECOND FLOOR
970 SQ. FT.



BASEMENT



The Remley & Sabato Difference.

A level of greatness that can only be Remley and Sabato. Our attention to detail is tailored to your specific needs.

Our Guarantee

Legacy. A commitment to excellence since 1978.

Funding. Our homes help fund projects in Africa through the Forgotten People Connection.

Customization. Tailored details to fit your family's lifestyle and needs.

Discover Drayton Ridge.

Contact us today to view the feature model.



B E D E L L D R I V E
COLLECTION OF SEMI DETACHED

ALBY MBANJABAHIZI
PROJECT / PURCHASING COORDINATOR

support@sabatohomes.ca
+1 (519) 489-6758

SABATO
— HOMES —

All drawings and renderings are an artist's concept and may vary slightly from the final product. E. & O.E. Actual usable floor space may vary from stated area, and square footage has been calculated based on usable living space according to the Tarion rules. Drawings may show optional features which may not be included in the base price. Bulkheads and box outs may be required as chases for plumbing and mechanical. Location of mechanical room equipment will be located by the builder and may change based on plan. Garage man door location may vary, subject to grade. Number of steps in front entry, rear entry (if applicable), and garage entry may vary based on grade. Actual finishes and layout may defer from renderings and floor plan. Jan 2026.